

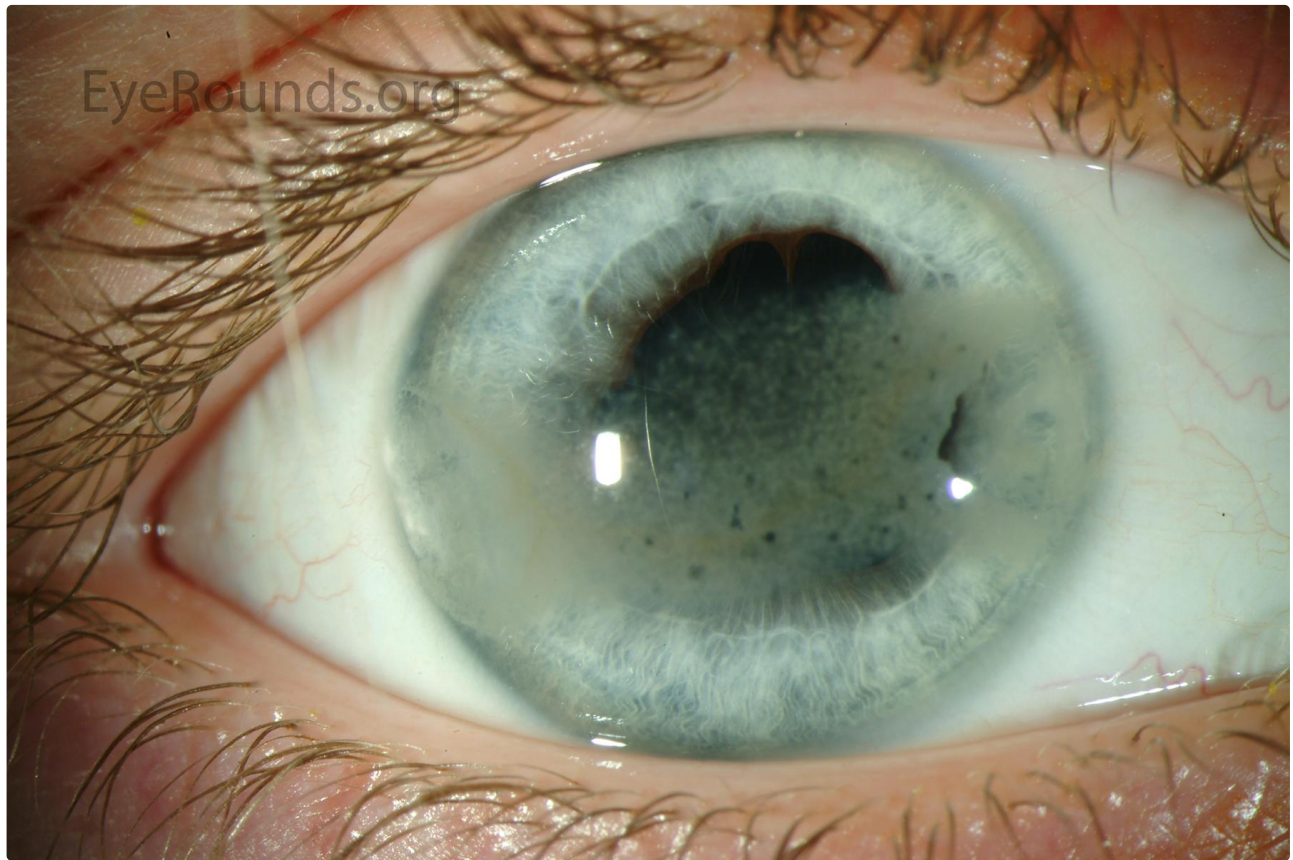
## Calcific band keratopathy with lucent holes

Category(ies):

Contributor: [Jesse Vislisel, MD](#)

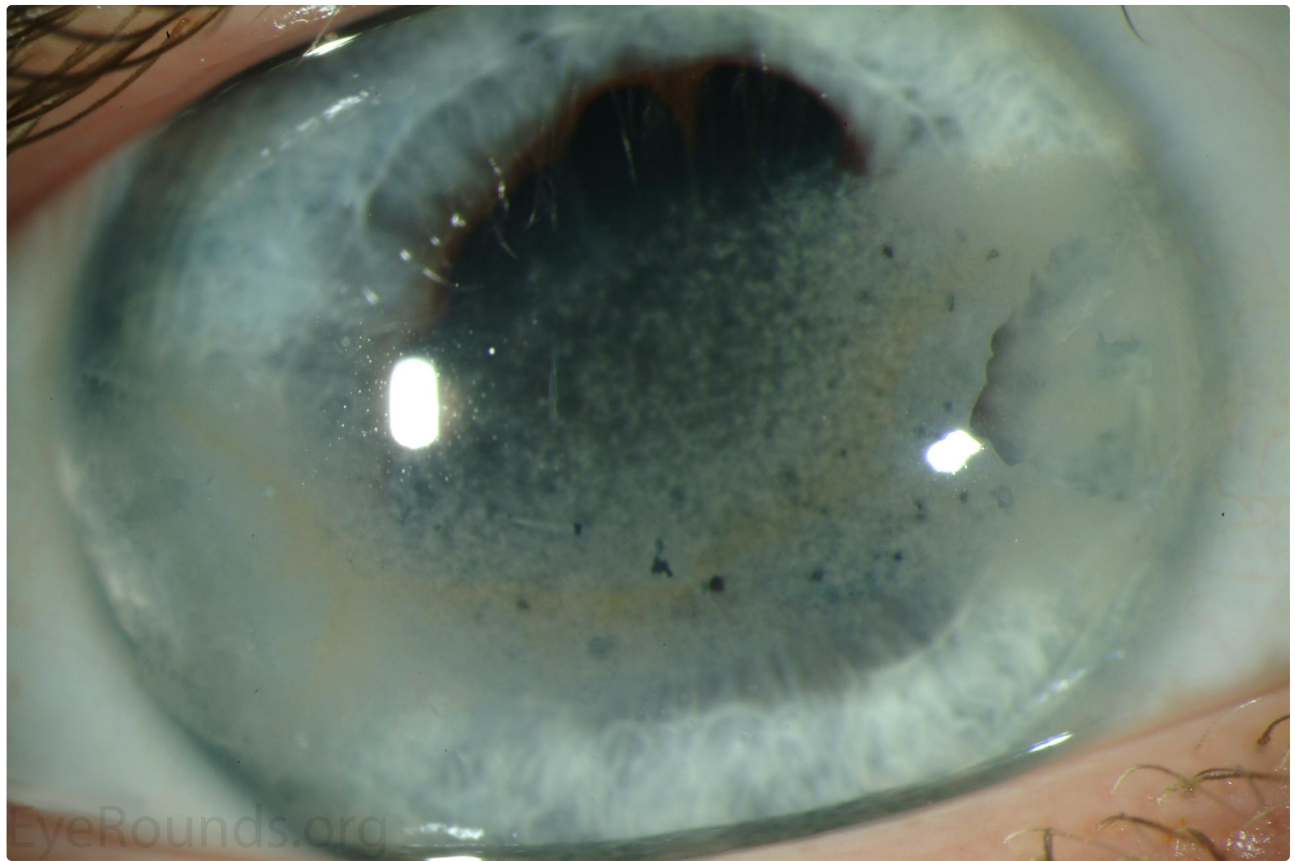
Photographer: Randy Verdick, FOPS

Calcific band keratopathy (BK) is a corneal degeneration that is characterized by deposition of calcium within the superficial cornea, mainly within Bowman's layer. BK usually begins as fine, yellow-white deposits in the periphery that may coalesce over time to form a horizontal band across the cornea. This photograph shows BK in a patient with HLA-B27-associated uveitis. The "Swiss cheese" appearance derives from lucent "holes" in the calcific pattern due to corneal nerve penetration through Bowman's layer.



 Enlarge

 Download



[Enlarge](#)

[Download](#)

### Image Permissions:



Ophthalmic Atlas Images by [EyeRounds.org](http://EyeRounds.org), [The University of Iowa](http://The University of Iowa) are licensed under a [Creative Commons Attribution-NonCommercial-NoDerivs 3.0 Unported License](https://creativecommons.org/licenses/by-nc-nd/3.0/).



### Related Articles



[Case Report: Calcific Band Keratopathy](#)

---

## Address

University of Iowa  
Roy J. and Lucille A. Carver College  
of Medicine  
Department of Ophthalmology and  
Visual Sciences  
200 Hawkins Drive  
Iowa City, IA 52242

[Support Us](#)

## Legal

Copyright © 2019 The University of  
Iowa. All Rights Reserved  
[Report an issue with this page](#)  
[Web Privacy Policy](#) |  
[Nondiscrimination Statement](#)

## Related Links

[Cataract Surgery for Greenhorns](#)  
[EyeTransillumination](#)  
[Gonioscopy.org](#)  
[Iowa Glaucoma Curriculum](#)  
[Iowa Wet Lab](#)  
[Patient Information](#)  
[Stone Rounds](#)  
[The Best Hits Bookshelf](#)

## EyeRounds Social Media

Follow



Receive notification of new cases,  
[sign up here](#)  
[Contact Us](#)  
[Submit a Suggestion](#)